



St. Lawrence Lodge
Care To Believe™

FOR IT COMES FROM WITHIN®



Resident and Family Newsletter

LONG TERM CARE SINCE 1970

June 2016

INSIDE THIS ISSUE

- 1** Family Council Recognition
Social Invitation
- 2** Calendar of Events –
June 2016
- 3** MOHLTC Accommodation
Charges Notice
- 5** Weather Reminders/Family
Council Thank You
- 6** Volunteer Thank You/
Residents at Events/In
Memoriam Notices

Our Vision

St. Lawrence Lodge will be a leader in providing progressive long term care.

Our Values

Respect

Quality Service

Person-Centered Care

Compassion

Our Mission

St. Lawrence Lodge provides quality, person-centered, long term care in partnership with families and care givers and in collaboration with community resources.

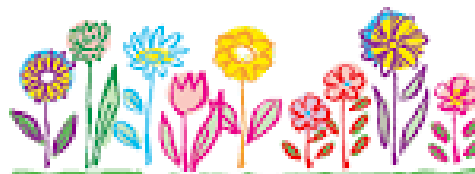
Our Philosophy

We believe the atmosphere of our Home lies with those who reside and work with us. The Home celebrates resident life as it is being lived today in an environment that enables an optimal level of independence, choice, and individuality.

YOU'RE INVITED!

The St. Lawrence Lodge Family Council cordially invites you to attend a Wine and Cheese Social to celebrate Family Council Recognition Week and the 10th Anniversary of the Move to the "New" St. Lawrence Lodge.

Date: Thursday June 9th
Time: 2:00 pm
Location: Fireside Lounge



You're Invited!

Province Announces Basic Co-Pay and Preferred Accommodation Rates

The Ministry of Health and Long Term Care (MOHLTC) has issued a communication outlining increases to co-pay and preferred accommodation rates, effective July 1, 2016.

A copy of the rate change bulletin is included starting on page 3 of this newsletter. The co-pay rate notice has also been posted in the Business Office and on the information board near the elevator lobby.

It should be noted that the MOHLTC also advised Long Term Care Homes that starting in 2016 semi-private and private accommodation rates will be indexed to a measure of inflation each year. The MOHLTC did not specify which inflation measure will be used.

Calendar of Events

Wed., June 1 st	Music with Wayne	Cedar – 10:30 a.m.
Wed., June 1 st	Birthday Musical	
	Harmonica Sing-A-Longs	Town Square – 1:45 p.m.
Tues., June 7 th	B.J. Hughes at the Piano	Town Square – 10:00 a.m.
Tues., June 7 th	Beth – Flute	Maple – 11:00 a.m.
Tues., June 7 th	Happy Hour	Town Square – 6:45 p.m.
Wed., June 8 th	Music with Vangie	Pine – 10:30 a.m.
Wed., June 8 th	Parabus Shopping – Wal Mart	Front Door – 1:00 p.m.
Thurs., June 9 th	Lodge Wine & Cheese Open House	Town Square – 2:00 p.m.
Fri., June 10 th	Great Music Guys	Town Square – 10:15 a.m.
Sat., June 11 th	Tom Wilson Trio	Town Square – 1:45 p.m.
Tues., June 14 th	Music with Jacquie	Cedar – 3:30 p.m.
Tues., June 14 th	The Troubadours	Town Square – 6:45 p.m.
Wed., June 15 th	Music with Vangie	Spruce – 10:30 a.m.
Wed., June 15 th	Music with Wayne	Elm – 10:30 a.m.
Wed., June 15 th	Bernie & Verna	Cedar – 10:30 a.m.
Wed., June 15 th	Brockville Museum	Chapel – 1:45 p.m.
Thurs., June 16 th	Father's Day Pub – Winnona	Town Square – 1:45 p.m.
Sat., June 18 th	The Brown's	Town Square – 1:45 p.m.
Tues., June 21 st	Beth – Flute	Cedar – 11:00 a.m.
Tues., June 21 st	St. Lawrence Entertainers	Town Square – 1:45 p.m.
Tues., June 21 st	New Hope Choir	Town Square – 6:45 p.m.
Tues., June 21 st	Music with Jacquie	Pine – 3:30 p.m.
Sat., June 25 th	Pub – Matt Hayes	Town Square – 6:45 p.m.
Tues., June 28 th	Beth – Flute	Birch – 11:00 a.m.
Tues., June 28 th	Music with Jacquie	Maple – 3:30 p.m.
Tues., June 28 th	Sweet Memories	Town Square – 6:45 p.m.
Thurs., June 30 th	Dave Rowan	Town Square – 1:45 p.m.

SPECIAL CARE (OAK)

Wed., June 1 st	Music with Vangie	10:30 a.m.
Sat., June 4 th	Hudson Majaury	1:45 p.m.
Mon., June 6 th	Music with Joyce	10:30 a.m.
Tues., June 7 th	Music with Jacquie	3:30 p.m.
Fri., June 10 th	Dave Rowan	1:45 p.m.
Mon., June 13 th	Music with Joyce	10:30 a.m.
Tues., June 14 th	Beth – Flute	11:00 a.m.
Thurs., June 16 th	Bernie & Verna	10:30 a.m.
Mon., June 20 th	Music with Joyce	10:30 a.m.
Wed., June 22 nd	Music with Vangie	10:30 a.m.
Fri., June 24 th	Harmonica Sing-A-Longs	1:45 p.m.
Mon., June 27 th	Music with Joyce	10:30 a.m.

**Please Note
Changes to
Business
Office Hours**

For Trust Account Banking

Monday to Friday 9:00am to 12:00pm
1:00pm to 3:45pm

For Regular Operations

Monday to Friday 9:00am to 12:00pm
1:00pm to 4:00pm

Closed Saturday, Sunday, and Statutory Holidays

Bulletin to Residents of Long-Term Care Homes: Important News Regarding Long-Term Care Home Accommodations Charges

Ministry of Health
and Long-Term Care

MAY 2016

Renseignements aussi
disponibles en français

Basic Accommodation Rates

On July 1, 2016, the co-payment that residents pay for basic accommodation in long-term care (LTC) homes **will increase by \$0.64 per day from \$58.35 per day to \$58.99 per day**, consistent with recent inflationary increases. This will help cover the rising costs of meals and accommodation.

Preferred Accommodation Rates

The maximum charges will also be increasing for residents admitted to newer preferred accommodation beds **on or after July 1, 2016**. The premium charged for semi-private accommodation will increase by \$0.13 from \$12.00 to \$12.13 per day, and the premium for private accommodation will increase by \$0.28 from \$25.00 to \$25.28 per day.

The table below provides the new rates that will apply as of July 1, 2016 to all types of accommodation based on a residents' date of admission to the bed.

Type of Accommodation	Daily Rate	Monthly
Long-Stay Resident:		
Basic	\$58.99	\$1,794.28
Semi-Private		
Residents admitted to newer beds on or after July 1, 2015.	\$71.12	\$2,163.24
Residents admitted to newer beds on or after September 1, 2014, but prior to July 1, 2015.	\$70.11	\$2,132.51
Residents admitted to newer beds on or after July 1, 2013, but prior to September 1, 2014.	\$69.10	\$2,101.79
Residents admitted to newer beds on or after July 1, 2012, but prior to July 1, 2013.	\$68.09	\$2,071.07
Residents occupying older beds, or residents admitted to newer beds prior to July 1, 2012.	\$67.08	\$2,040.35

Continued...

Private

Residents admitted to newer beds on or after July 1, 2015.	\$84.27	\$2,563.22
Residents admitted to newer beds on or after September 1, 2014, but prior to July 1, 2015.	\$82.50	\$2,509.38
Residents admitted to newer beds on or after July 1, 2013, but prior to September 1, 2014.	\$80.73	\$2,455.54
Residents admitted to newer beds on or after July 1, 2012, but prior to July 1, 2013.	\$78.96	\$2,401.70
Residents occupying older beds, or residents admitted to newer beds prior to July 1, 2012.	\$77.19	\$2,347.87

Short-Stay Resident (Respite Bed)

\$38.19 N/A

NOTE: "Newer beds" – beds classified as "NEW" or "A" according to ministry design standards
 "Older beds" – beds classified as "B", "C", "Upgraded D" or "D" according to ministry design standards

If you have requested a transfer from your current accommodation into a preferred accommodation bed, please call the LTC home administrator to confirm the rate that you will be required to pay. Preferred rates for semi-private and private accommodation in your current LTC home or in another LTC home may be different if you are offered a bed on or after July 1, 2016.

If you are currently paying less than \$58.35 per day because you are receiving a reduction in the basic co-payment, known as a "Rate Reduction", then you should reapply for a rate reduction as the current rate reduction expires on June 30, 2016. Staff at your LTC home will provide you with the application form and will help you to submit your application to the Ministry of Health and Long-Term Care.

For more information on co-payment rates or the changes to the rate reduction application process, please speak with your home's Administrator. Should you have any additional questions, please contact: LTC Homes Action Line at **1-866-434-0144**

Hot Weather Reminder to All Residents and Family Members to Be Aware of Staying Out for Extended Time in the Courtyards and Balconies!

With the warmer summer weather now upon us, all residents and family members are reminded to be especially diligent when using the balconies and courtyards on hot, muggy days. This is to ensure that residents are not putting themselves at risk by being exposed to the warm weather and hot sun.



Please make a point of taking proper sun precautions such as wearing a hat and drinking lots of fluids. Thank you for your cooperation everyone!

Reminder to Keep Windows Closed to Maintain Air Cooling in the Building



It is also worth reminding everyone that the building air conditioning system will work much better if all windows are kept closed during the hot, humid summer conditions.

Some residents are insisting on keeping their windows open. This is not advised as the hot outside temperatures can penetrate deep into the building if windows are left open.

So, please cooperate by keeping resident room windows properly sealed so the cooling system can keep up! Thank You!

St. Lawrence Lodge Family Council

Ontario has declared the week of June 6th-11th, 2016 as Family Council Recognition Week. St. Lawrence Lodge's Family Council will be hosting a Special Social Event on Thursday June 9th to recognize the important work that Family Council undertake across the Province. Details are outlined on page 1.

The following volunteers are members of the St. Lawrence Lodge Family Council:

Margo Stone
Candace Kaine
Helen LeBlanc

Jessie Rowntree
Susan Magalas
Bonnie Monteith

Debbie Simpson
Linda Evans
Janice Twaddle

*Thank
you*

As part of their role as Family Councilors, they are available to assist family members with questions they may have about life at the Lodge. Please feel free to approach any of these individuals should you require assistance and guidance.

St. Lawrence Lodge wishes to express its appreciation to these members, as well as, all of the past members, who have volunteered their time and energy to assist residents and family members over the years.

St. Lawrence Lodge Volunteer Appreciation

It's not for the money, it's not for fame
It's not for any personal gain
It's just for love of fellowman
It's just to lend a helping hand
It's just to give a tithe of self
That's something you can't buy with wealth
It's not medals won with pride
It's for that feeling deep inside
It's that reward down in your heart
It's that feeling that you've been a part
Of helping others far and near
That makes you be a Volunteer!



No one is more cherished in this world than someone who lightens the burden of another.
How beautiful a day can be when kindness touches it!
Thank you to all of our volunteers for making a difference in the lives of our residents!

We are sending a reminder to family members to ensure that you notify staff members when you are going to be leaving an activation event and the resident is still in attendance. Our staff need to know if a resident is going to be left unassisted so they know that they need to be with the resident to return to their unit.



Pastoral Care - In Memoriam Notices



The Pastoral Care Services Team has recently received questions regarding how communications occur when a resident passes away. The Pastoral Care Services Team is responsible for placing the resident's name on the In Memoriam Reflection Page, which is posted across the hall from the Chapel/Worship Center. The In Memoriam Page is updated each month and new information is posted in a timely manner. People are welcome to view the In Memoriam Page on a regular basis.

Mark Your Calendars!
Resident And Family Outdoor BBQ Under the Tent!
Wednesday August 10th!

